

# 665 Blair Avenue

Piedmont, CA 94611

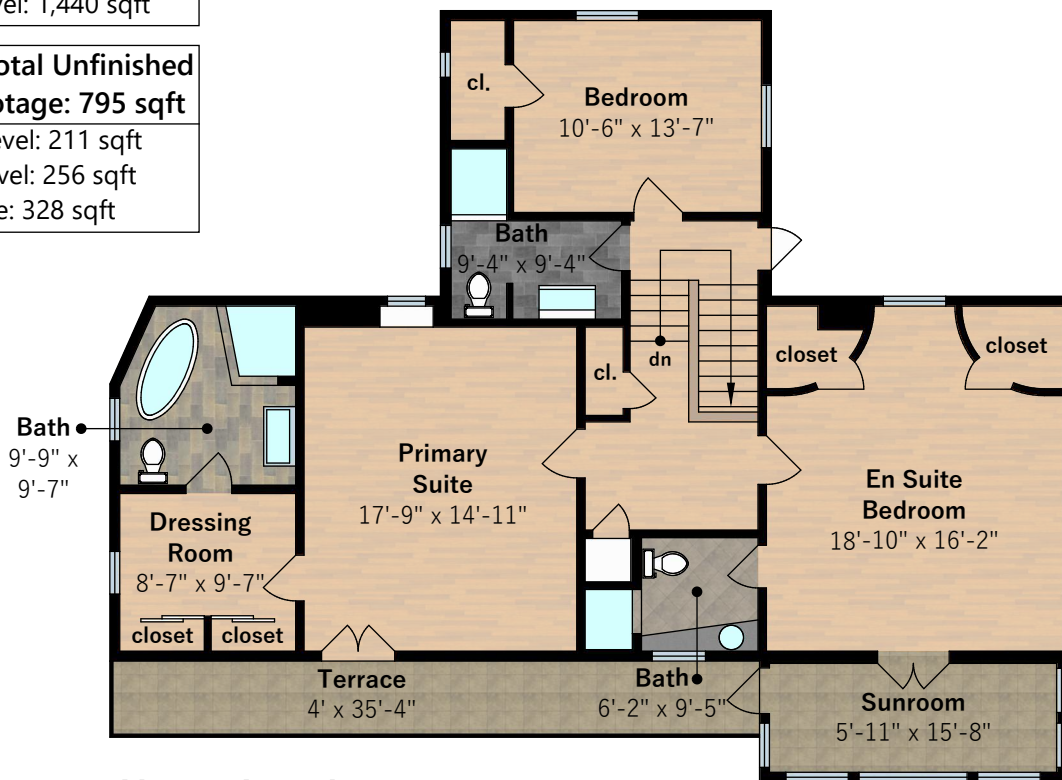


**Estimated Total Finished  
Square Footage: 3,448 sqft**

Lower Level: 821 sqft  
Main Level: 1,187 sqft  
Upper Level: 1,440 sqft

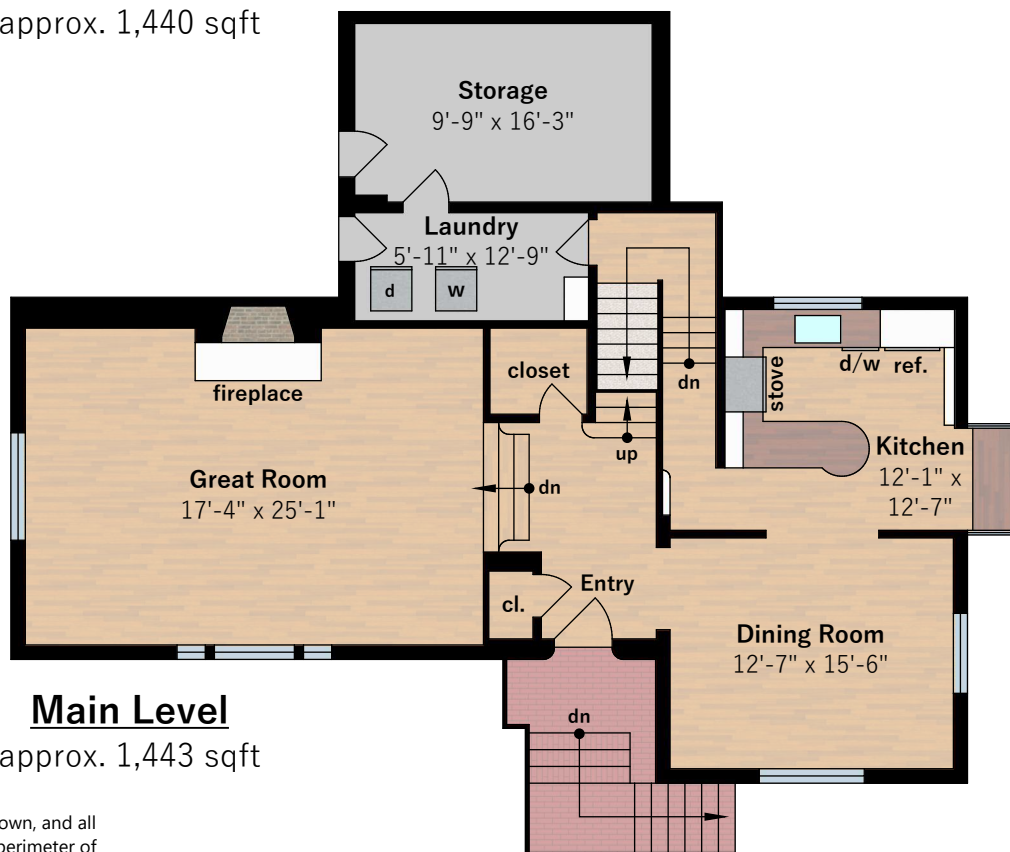
**Estimated Total Unfinished  
Square Footage: 795 sqft**

Lower Level: 211 sqft  
Main Level: 256 sqft  
Garage: 328 sqft



## Upper Level

approx. 1,440 sqft



## Main Level

approx. 1,443 sqft

Interior room dimensions are shown, and all square footage measured from perimeter of exterior walls. Decks, porches, and patios are not included in calculations.

Measured on January 13th, 2023

Any and all information on this drawing is for illustrative purposes only and is deemed reliable, but not guaranteed. All information requires independent verification.

Listed By: **Jane Strauch**

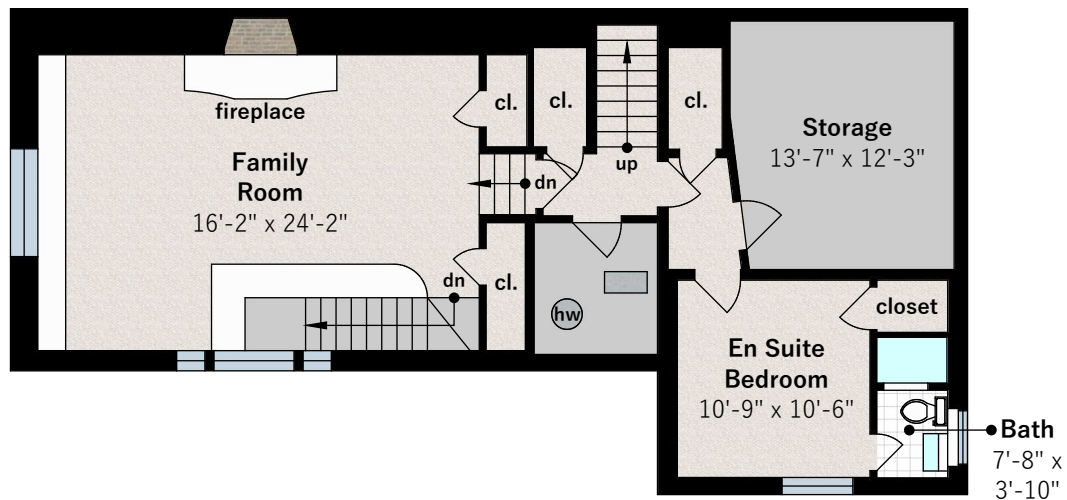
[jane@janestrauch.com](mailto:jane@janestrauch.com)

# 665 Blair Avenue

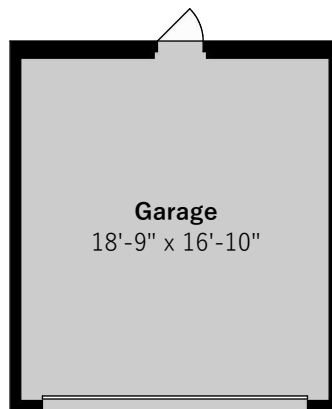
Piedmont, CA 94611



## Lower Level approx. 1,032 sqft



## Garage approx. 328 sqft



<b>Estimated Total Finished Square Footage: 3,448 sqft</b>
Lower Level: 821 sqft
Main Level: 1,187 sqft
Upper Level: 1,440 sqft

<b>Estimated Total Unfinished Square Footage: 795 sqft</b>
Lower Level: 211 sqft
Main Level: 256 sqft
Garage: 328 sqft

Interior room dimensions are shown, and all square footage measured from perimeter of exterior walls. Decks, porches, and patios are not included in calculations.  
Measured on January 13th, 2023

Any and all information on this drawing is for illustrative purposes only and is deemed reliable, but not guaranteed. All information requires independent verification.

Listed By: **Jane Strauch**  
jane@janestrauch.com